



# PIONEER



Vol. I, No. 24

Amache, Colorado

January 14, 1943

## DATE SET FOR CHARTER VOTE

### CO-OP DRIVE POSTPONED

A postponement of the community enterprises' charter membership drive was announced by E.H. Runcorn, associate community enterprises superintendent, yesterday.

This was done to give the incorporation committee an opportunity to sign the articles of incorporation of a consumer cooperative.

Also, this extra time will be used to better educate the employees, block managers and representatives, and the residents of the nature and the advantages of a consumer cooperative, Runcorn further explained.

### Teachers from Lamar Visit

Sixty-five Lamar teachers and their husbands and wives will tour the center and inspect Amache schools this afternoon. A dinner and program are scheduled.

### NEW RULES ON PASSES MADE BY POLICEMEN

Passes will be issued between 8:30 and 9:30 a.m. and 1 to 2 p.m. on week days, and from 8:30 to 9:30 a.m. on Saturdays in the south administration building, the police department announced yesterday.

Tuesday, Wednesday, and Thursday passes must be obtained on Monday; Friday and Saturday passes on Wednesday; and Monday passes on Saturday, the department stated.

Hereafter, passes will be issued for emergencies only. No more shopping passes will be given unless

### 3,779 POUNDS OF FAT SALVAGED

Through cooperation of the kitchen crews and butcher staff, 3,779 pounds of fat were salvaged during the past month, revealed William Wells, project steward.

The center will continue to send its monthly contribution of fat to Wichita, Kan.

### BALLOTING WEDNESDAY

The center charter will be voted upon by the residents for official ratification Wednesday, W. Ray Johnson, community services chief, said yesterday.

All residents, 18 or older, are eligible to vote. The charter has been approved by Project Director James G. Lindley and was submitted to the residents more than a week ago.

The charter will go into effect as soon as it is ratified by a majority vote of the residents. A general election for block representatives and councilmen will take place 15 days after its adoption.

The center will be divided into five districts of six blocks each and each district will be represented by one councilman who shall be elected by and from the block representatives of that district.

### Allowances May Be Split

Residents who have received but part of their clothing allowance were today asked by John O. Moore, head of the social welfare division, to wait until all checks are mailed out before making inquiries at the reception center.

Because there are two bases, residence in the center and work, clothing allowances may come in two checks, Moore explained.

Checks are for July, August, and September.

### Boulder to Get Three

Three more instructors for the Naval language school at Boulder are scheduled to leave next week with Project Director James G. Lindley, announced Registrar Lewis W. Fanslan, today.

Four instructors left the center last week and two more followed this week.

### CHECK FUND DOUBLED

The check-cashing fund has been more than doubled and the cashier's office will be open from 10 to 11:30 a.m. and from 1 to 3 p.m. beginning tomorrow, according to Kendall Smith.

## TOWN HALL TALK

The committee on social welfare in cooperation with the block managers sent G-mochi to those confined in institutions in California.

The educational program and the promotion of share buying for the Amache community enterprises, inc. was approved by the council. This was submitted by the committee on enterprises. This group will continue its work until a board of directors has been duly elected by the shareholders.

--Tsugime Akaki

## GRANADA PIONEER

Published Tuesdays, Thursdays, and Saturdays by the WRA and distributed free to each apartment. Editorial office: PIONEER building, Amache, Colorado. Telephone: 03.

Oski Teriaki, director

Bob Hirano, Editor

Staff: Taxie Kusunoki, Jack Ito, Robert Asanobu, Tomoko Yatabe, Alice Taketa, Joseph Ide, Choji Nakano, Elmer Ioka, Hiromichi Morimoto, Tsugime Akaki, Jim Yamaguchi, Sab Okamura, George Hanamoto, Masaji Murai, John Tsuruta, Hiroshi Ito, Harry Ioka, Edith Kodama, Jun Taketa, Makoto Morita, Yutaka Kubota, Ernest Uno, Roy Hamaji, Suyeo Sako, Jiro Sumits, Frank Yoshida.

## The Charter

Next week residents of Amache over 19 years of age will have an opportunity to express their feelings about the center charter drawn up by a special committee of the temporary council.

The entire English text of the charter was printed in the Dec. 30 edition of the PIONEER. A full translation in Japanese appeared with the Jan. 6 edition.

Its importance to each and every person in the center cannot be overstressed. We urge everyone to read it, study it, and vote on it on Wednesday.

## SKETCHES

Rev. Kosaburo Baba first set foot on United States soil in San Francisco in 1880. Grover Cleveland was serving his first term that year, and on the other side of the continent, Bartholdi's Statue of Liberty was unveiled.

To go back over the Reverend's 57 years in this country is to review a life of pioneering and sharing in the development of the West.

He first helped introduce Japanese labor on California farms and fruit ranches and campaigned vigorously to improve wages and working conditions.

His decision to turn to the ministry came in the early 1900's, when he waged a bitter fight to wipe out early gambling dens in Oxford, Calif., that claimed many of his friends for victims.

After establishing Oxford's original Japanese Methodist church, he spent several years traveling. He was in Colorado in 1928 and spent three years in Denver as an evangelist.

Today at 89, white-bearded and still in good health, Rev. Baba is the oldest living minister of Japanese ancestry in the United States.

He attends church regularly, studies and exercises daily, and gives advice readily to those desiring it.

--Suyeo Sako

## Letters TO THE EDITOR

TO THE EDITOR:

We wish to publicly thank Ed Newman, proprietor of the Newman Drug store, Granada, for his donation of basketball suits to our club.

Originally, Mr. Newman planned to sponsor the club

for which we were to use the name of his store. The plan, however, was contrary to the WRA administration's policy, so in the spirit of good will, Mr. Newman generously donated the suits to us.

KAU KAU LAINE AC

*Rustlings*  
FROM OTHER CENTERS

Camouflage net workers will be paid their wages semi-monthly in accordance with the Arizona state law.

The barber shop was opened with 10 operators on the staff. Price of a haircut is 15 cents.

Man-jong and pinochle tournaments were conducted.

A letter in the Dispatch by B.H. (someone who found work on the outside) states, "I strongly urge the loyal nisei to get out of camp.... The feeling of being an integral part of this American nation is something you people in camp do not fully realize."

Classes will be open to residents in fox trot, waltz, rumba, tango, conga, jitterbug, and tap dancing.

Approximately 443 evacuees arrived from Hawaii.

Previously, 107 persons entered the center.

Mess hall workers were the first to receive their December pay checks.

A girl baby was the first born on New Year's day.

The US Navy department in cooperation with the WRA will allow nisei to help in the war effort by making ship models and silk screen posters. These will be used for visual training work by the Navy.

MOVIES...

Movies made their debut here. "The audience is asked temporarily to bring own chairs and blankets."

A Junior Red Cross drive will be conducted for one week in the center schools.

Jankee, their mascot, came out in three colored print, red, yellow, and black in the New Year's edition of the Topaz Times.

## Director and Aides in Tour

James G. Lindley, project director; Henry F. Haliday, senior administrative officer; and Ralph O'Rourke, engineer, today left the center to inspect Civilian Conservation corps buildings in Pueblo and Colorado Springs. They will see if the buildings can be moved here.

## RULES RELEASED ON FAMILY INTERNMENTS

Information from Washington DC regarding the reuniting of families with members in the internment camps was released by Project Director James G. Lindley, yesterday.

"The WRA cannot be held responsible for any changes that might be made by the Justice department, nor

can it make promises to evacuees concerning what the internment camps will be like," stated Lindley.

The information follows: A family internment camp is now being built in Texas.

Persons entering a family internment camp will probably be required to sign a statement that they understand they will be subject to camp discipline, and that they will remain there for the duration. Camp discipline includes the censorship of all mail and the strict supervision of all visits.

It is not expected that persons in the camp will be forcibly repatriated or expatriated.

A citizen will still be a citizen after entering a camp. However, it is possible that there will be no difference in the treatment between internees and citizens.

The date of transfer to a camp is not definite and the question as to who will pay the expense of the transfer is still undetermined.

Personal assets will probably not be frozen, but funds will probably be turned over to the camp fiscal officer, and all financial transactions handled through him.

Presumably, voting rights will not be affected.

On receipt of additional and more specific information, it will be published in the PIONEER, said Lindley.

## Stage Singer To Appear

A concert of sacred and classical songs will be presented by Dorothy McDougall, clerk-stenographer, at Terry hall Jan. 23. Lily Matsushige will be the accompanist.

The choir, under the direction of Mayme Kishi, will also render a few selections.

The program is sponsored by the music appreciation division of the recreation department.

## TRANSFERENCE OF GOODS REQUIRE FINAL FORMS

The remaining notices for residents to sign forms for the transferring of household goods from California warehouses to this center will be sent to them by the end of this week, according to Dorothy McDougall, clerk-stenographer.

If residents do not receive notices and wish to KITAGAWA FILLS POLICE VACANCY

R. T. Kitagawa has taken the position of police secretary left vacant by A. Minabe, who departed for Boulder this week.

Kitagawa was the secretary prior to the last police election.

have their stored goods shipped here, they are asked to fill out the forms beginning Monday in the south administration building, room 6.

## VITAL STATS

### BIRTHS:

To Mr. and Mrs. Paul Otani, 11F-9E, a boy, Kenneth Isaac, Jan. 8.

### MARRIAGES:

Stella Harmon, senior clerk, to August Zanoni, in Albuquerque, N.M., Jan. 10.

Edith Fusaye Yasuda, 8F-1E, to Yoshio Yoshimoto, 8F-3B, in the center, Jan. 11.

## MID-WEST OFFERS VARIED EMPLOYMENT OPENINGS

Interested applicants for various jobs in the mid-west are requested to come to the employment office for interviews, it was announced yesterday by Mario Vecchio, placement officer.

Mechanized farm workers, janitors, domestics, and a girl with nursery maid

experience, are needed in Kansas City, Mo.

A short order cook and a pot washer are wanted by a Chicago YMCA.

A family of three or four is also wanted to lease or rent a 10 acre vegetable farm near Denver on a share basis for 50 per cent of the crops.

## THE FARM FRONT

Utilizing available equipment and land, farm section workers during the past four months have been nurturing livestock and poultry, the products of which are to be contributed toward future subsistence of the center.

Cows, chickens, and pigs are being raised on the Koen ranch, while alfalfa hay and sorghum grain crops for feed come from the XY.

Plowing in preparation for the coming season's crops to round out the food supply got underway to the extent of 350 acres on the XY ranch before frost cut the work short. Recent weather conditions, however, indicate that plowing soon can be resumed.

## Junior High Co-op Opens

The junior high school co-op store, featuring a complete line of school supplies, was officially opened Monday at 8H-2F.

More than 200 students are members of the co-op, which sold shares for 25 cents per share.

The store is being operated by a board of directors composed of 12 students, each of whom represents a class.

Instructors Robert George and Lafayette Noda are advisers for the board of directors.

## BUDDHISTS TO INSTALL OFFICERS

Installation of YBA officers will highlight the inaugural meeting of the Buddhist church at 6:30 p.m. in Terry hall Sunday. A social hour will follow the service and installation ceremony. Tickets may be obtained from YBA leaders for 10 cents each.

## LOST AND FOUND

**FOUND:** Cash in the canyon by Mr. Noguchi, 7E-3F, on Tuesday. Owner may claim the money at the police department by stating the amount.

## CO-OPS OF, BY, AND FOR YOU

### CASH SALES AT MARKET PRICES

Besides the four fundamentals of consumer cooperation that were previously enumerated, several secondary principles through experience have been found vital for success.

The most important of these is the one most often debated and modified with fatal results. That is, cash sales at prevailing market prices.

Credit and cut-rate prices, the antitheses of this rule, are often the reasons for failure of co-ops. Members do not discipline their selfishness nor are long-sighted enough to resist the temptation to sell on credit or below competitive price levels.

This principle will be a hot issue in relocation centers most likely, but it should be adhered to

CHURCH SERVICES SATURDAY		
Event	Time	Rec Hall
SEICHO NO IYE Service	7:00 p.m.	12G
BUDDHIST Adult service	2:00 p.m.	7G-12G
CATHOLIC Mass	7:00 a.m.	11K
<del>SEVENTH-DAY</del> ADVENTIST Sabbath school	9:00 a.m.	7G
Sermon	10:00 a.m.	7G

## Short TAKES

The following changes in the Buddhist choir practices have been announced: Tuesdays from 6:30 to 7:30 p.m.; Thursdays from 6:30 to 7:30 p.m., and Sundays from 1:30 p.m.

The college-age group of the Christian church is planning an excursion to the Arkansas river Sunday. The fee for the trip will be a Pepsi-cola and sandwiches.

The offices of the center YWCA and YMCA are now located in the 6G recreation hall, it was announced at the coordinating council meeting Tuesday. The YMCA is planning to use a part of its hall as a USO center.

Kenji Okuda, contactman for the college council, left the center Jan. 11 to enter Oberlin college, Ohio. His vacancy has been filled by Hideo Ihara.

**WANTED:** 5 secretaries. Beautiful, curvaceous, in early twenties, with pleasant personalities, and accustomed to Bohemians. Experience not necessary. See Kim Yamasaki, Art department, community enterprises.

Books and tools confiscated at Santa Anita may be claimed at the Boy Scout headquarters, 10E recreation hall, according to Masaji Murai. Records are still contraband, however.

for the following reasons:

1. Credit always involves some losses. These must be made up either by higher prices or lower dividends, both being bad for the cooperative.

2. Credit sales cause more bookkeeping and collection expense.

3. More capital is required to operate, and capital bears interest.

4. Credit business usually involves the same method with wholesalers with consequent and consistent loss of discounts.

So much for the dangers of credit business. The dangers of disregarding prevailing market prices are even greater. Here's why:

1. Actual cost at retail cannot be known accurately in advance.

2. Prices below the market level invite price

wars which cannot be won without large surplus reserves.

3. Reserves cannot be built to guarantee longtime success and security.

4. Cut-rate prices invite antagonism and breakdown of relations with suppliers.

5. Cut-rate prices eliminate or reduce the educational fund which is needed for the development and continuation of the cooperative movement.

6. Cut-rate prices eliminate patronage dividends which are the economic motive for building cooperative ownership and control.

7. Cut-rate prices cannot provide for proper depreciation of equipment.

8. Cut-rate prices cannot provide the capital needed for expansion.

--E. H. Runcorn

# MISS WALNE LAUDED FOR AIDING EVACUEES

Most of the job placements for evacuees in Boulder are due to the friendly attitude of the townspeople and to efforts of Florence Walne, director of the Naval Language school, stated Registrar Lewis W. Fanslan.

Miss Walne, born and reared in Japan, has long been familiar with the problems of the US Japanese

on the Pacific coast. Due to her sympathetic interest, it has been possible to place a stenographer, six school girls, and 15 evacuees for the kitchen crew serving the Navy school dormitories.

Many national magazines are preparing copy for articles on Boulder and the part played in the war effort by the evacuees.

# SOCIAL WORK JOBS OPEN

Two or three persons who are interested in learning about professional social work are asked to apply for employment at the reception center, according to John O. Moore of the public welfare division. They will be classified as junior case workers.

Applicants should have had some college training, especially in the social sciences; have had any experience in social agencies; and speak Japanese.

# RECREATION DEPARTMENT HAS ADVISORY COMMITTEE

Five members of the council body were chosen to act as the recreation department's advisory committee recently, B. Umezawa

wa revealed the week.

They are G. Mitani, Y. Yoshizawa, B. Umezawa, K. Sugahara, and E. Gondo.

Yoshizawa and Mitani will serve as treasurers while C. Fujii will act as the auditor.

This body will work with Harvey Turk, associate community service officer, in supervising all recreational activities.

# Indians Hosts To Hartman

The Amache Indian five will play host to the Hartman Panthers Saturday evening in the second game of a doubleheader to be played in the Granada high school gym.

Hartman will come with one of the strongest teams in this vicinity to battle the Indians. They have already beaten the Grenada Bobcats and have also taken the measure of the Holly five.

In the preliminary game the Amache C team will play the Hartman sophomore-freshman team.

According to Coach John Hoke, the admission price for all school students will be 15 cents with adults 25 cents. He also stressed that tickets are sold at the high school principal's office.

Students should purchase tickets before 5 p.m. Saturday, as only 25 cent tickets will be sold at the gate, said Hoke.

# STATE WELFARE WORKER TO VISIT

Florence Humphries, consultant for the state department child welfare division, will visit the center the week of Jan. 18 to discuss the services available for the public welfare section.

# QUICK FREEZE UNIT APPROVED

Plans for a quick freeze unit for food now stored at Lamar have been approved by O. B. Wiltz of the WRA's Washington office, stated William Wells, chief project steward.

Wiltz arrived here to inspect refrigeration installations on the project.

# VISITORS

## SOLDIERS:

Sgt. Shigeyoshi Takata, Ft. Leonard Wood, Mo.; Cpl. Asatoshi Hiratsuka, Ft. Meade, S. D.; Cpl. Fred Muramoto, Pfc. Toshi Ishibashi, Sgt. Frank Watanabe, Pfc. Joe Arimoto, Pfc. T. Sakata, Camp Crowder, Mo.

## CIVILIANS:

Charles Fitch, Granada; Don J. Morton, Pueblo; M. Endo, Rocky Ford; T. Kunugi, D. Kunugi, Blanca; F. J. Henderson, Syracuse, Kan.; Clyde Roger, W.R. Janery, Denver; A.S. Carroll, Lamar; G. Shepard, Holly; Joseph C. Jones, Boulder; Jiro, Saburo, Yasuo Inada, Gene Hirakata, La Junta; Willie Aki, Fred Hirano, Salt Lake City; J. A. Ross, Dodge City, Kan.

# Students file Questionnaire

Residents interested in attending universities, colleges, or trade schools in the near future are requested to fill out the National student relocation questionnaire at the education section office, as soon as possible.

# HOSPITAL RULES GIVEN

Residents needing medical attention are asked not to call at the homes of the doctors, according to Gerald A. Duffy, medical director.

Dr. Duffy states that medical services may be obtained at the out-patient building of the hospital. A doctor is on duty day and night and will minister to the needs of the patient.

Ambulance service is available for people who need a doctor at night, he continued. If a call is made to the hospital, an ambulance will be sent after the patient.

# GEORGE MARUMOTO HEADS 7G CLUB

The Block 7G young peoples' club held an election of officers recently.

Those elected were George Marumoto, president; Reiko Habu, vice president; Sumi Hashimoto, secretary; Bill Fuchigami, treasurer; Kay Funayama, social chairman; and John Tsuruta, publicity.

Fred Arimoto is the adviser of the club.



A NEW SEASON

January 14, 1943

Page 6

The bowl games are over and football with its Sinkwiches and Governalis has passed into pigskin history. Sports followers from Madison Square Garden on the east to the Shrine auditorium on the west are now turning to basketball for their enjoyment.

No less so in the center. With an array of exceptionally talented players from all over California, interest is high, and teams are being formed for the newly proposed casaba league.

### A QUESTION

A debatable point arose over the recreation department's tentative ruling that "high school students will NOT be eligible to play in the basketball league sponsored by the rec. dept."

We believe that such a ruling is unfair for the students who, not being able to make the school teams, will not be afforded the opportunity to play in keen competition in a well-organized league.

Having heard that the managers of each club will meet tonight, we have thrown in our two bits worth in the hope that the managers will change the ruling and lift this restriction.

## LIST PING

## PONG CHAMPS

Maok Saito was crowned champion of the Block 12G ping pong tournament held in the 12G recreation hall Sunday, according to Mitch Hashiguchi of the recreation department. Reiji Nit-ta was the winner in the B division.

Suzie Yawata took the woman's title in the senior division while Marie Takata won the junior division.

Fifty-eight competed in the tournament.

## SCHOOL CAGERS TO RECEIVE PANTS

Ten pairs of pants for the Amache high school cage squad have been ordered, announced Coach John Hoke, Tuesday.

## PREP GIRLS LOSE, 13-12

A single point scored in the second half by the Granada girls' basketball team proved the margin that guined them a 13-12 victory over the Amache girls in Tuesday's prelim at the Granada high gym.

With Libby Tyner heading the attack, the Granadans were by far the superior team on the floor during the first half and were out in front, 12-4, as the gun sounded.

In the second stanza, the complexion of the game changed, and the Amache girls took control. They held the opposition to 1 point and tallied 7 for themselves. However, the final score read, 13-12, in favor of Granada.

Libby Tyner made 9 points for Granada while Nobuye Inouye and Mory Taniguchi chalked up 5 and 4 points respectively for the losers.

AMACHE	GRANADA
Taniguchi-4	F 9-L. Tyner
Takao-3	F 2-C. Tyner
Inouye-5	F 2-Porsely
Wada	G Everhart
Naruse	G McGee
Kinoshita	G Passini

Subs: Amache--Kawaguchi, N. Nakano, F. Nakano. Granada--Lacaco, Coffey, Tonozzi.

## HIGH SCHOOL BOYS TO SEE MOVIES

"Modern Basketball," a motion picture on the fundamentals and plays of basketball, will be shown to the Amache high school boys at Terry hall tomorrow at 3:45 p.m. by the education department, according to Coach John C. Hoke.

## Cage Meeting

A meeting of basketball managers slated for tonight has been postponed until 7 o'clock tomorrow night at the 7E recreation hall.

## INDIANS WIN OVER BOBCATS

The Amache high school varsity Indians added another victory to their list as they defeated the fighting Granada Bobcats, 39-31, in the feature basketball game played Tuesday night at the Granada high school gym.

Trailing 15-16 at the half-way mark, the Indians with Johnny Niizawa and Tosh Okamura doing some spectacular scoring, slowly but surely took over the lead and came out as victors.

Cool-headed pivotman Mas Okuda, who scored 8 digits, used his height to great advantage and controlled the backboard most of the game.

High scorers were Niizawa with 13 points and Okamura with 12.

For the Granada varsity, Roy Dossey took high scoring honors with 14 digits.

INDIANS	BOBCATS
Uyesugi-3	F 14-Dossey
Okamura-12	F 3-Vaucher
Okuda-8	C 2-M. Silva
Shimada	G 10-C. Silva
Niizawa-13	G 2-Buzona

Subs: Indians--Aoki-1, Kitagawa, Okamoto, Kajiocka, Yoshiwara-2, Kashiwara, Fukunaga.

Bobcats--Rangle, Araiza.

## Skookums Get 'A' Grid Crown

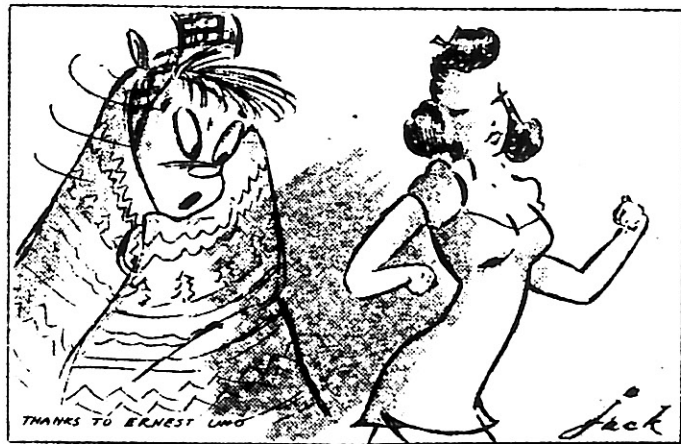
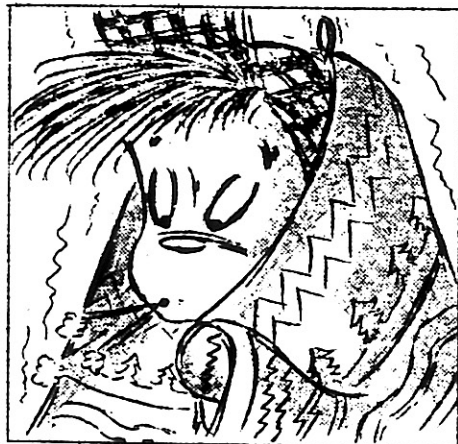
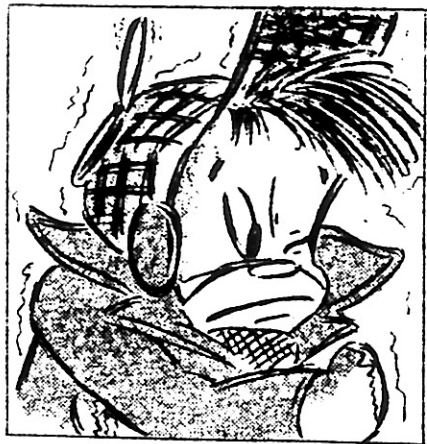
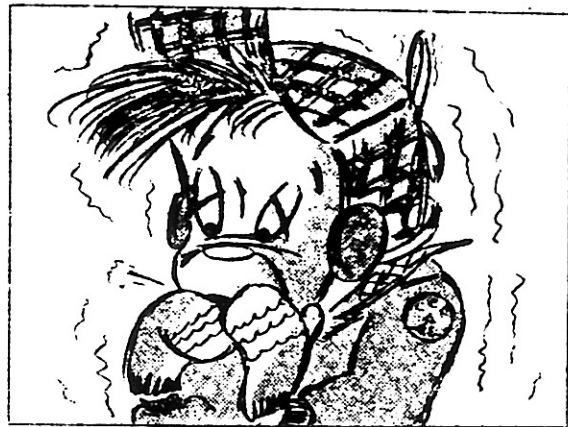
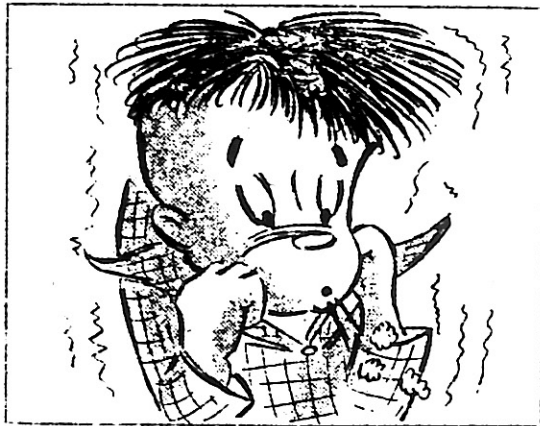
The Modesto Skookums were officially declared champions of the 1942 American touch football league by the recreation department yesterday.

This decision was made as five out of six teams did not care to finish the long drawn-out season. The play-off of postponed games would not have made any difference in the standing of the Skookums, it was pointed out.

A managers' meeting scheduled for tomorrow night has been cancelled.

# LIL' NEEBO

(LITTLE NISEI BOY)





◎共同消費組合 續き  
E.H.ランコーン

共同消費組合の四大原則に亘つては既に論じたが、即ち組合員の解放、一人一乗、資本に対する限定、買上げに対する割戻し等の條件を履行した場合に共同消費組合の名稱を附し難い。前例は幾多失敗のレコードは、この原則にかけたるた弊に起因してゐる。更に本專業を成功に導くものは現金賣りと物品の價値を市價の單位に置くこと云ふことである。周知の如くクレデント販賣は必然的に損を齎すものである。而してそれを防ぐには高く賣るか割戻しを減らすかの二方法に依らねばならず、然らば収容所に於いて何故市價販賣を維持する理由を換は

すもか左に説明をして見よう。一、現貨に於いて小賣値の正確なる單位は前以つて付け難いものである。二、減價販賣の競争は相当なる餘利資本なくしては成れない。三、減價賣りは必然的に品物の供給者側の反感を買ひ、其の關係が甘く行かない。四、消費組合に於いて最も重視される一般の教育に對する費用が減價賣りに對する所得難い。五、買物に對する割戻し並に右株券所有に對する配當は減價賣りに於いて是れに非ない。六、減價賣りで破損に對する辨償も、ピスネス擴張も、不レ難い。

◎薄倖な人々に正月餅

獸雲漲る全吾界……各々國運を賄して救戦の……そう。餘波を受つて現在の状況々々環境を顧みず時当収容所内にて正月餅と全般的に搦り得ようとは夢にまで見なかつた事笑である。幸ひ当局の寛大な配慮の下に正月餅の恩典に浴した吾等が幸福を感謝すると共に忘れたはならないものは薄倖の境遇にある人々である。現在加州の諸々の郡刑病院に呻吟する腐敗の數十餘名の多きにエリ……親と別れ妻子と別れ兄弟姉妹と離れ、これに思ひ過ぎ過ぎ云々追憶し、遠く故郷を思い妻手を悲し不運極りなき現在、境遇を歎き悲みつ、あるてあらずの心周情心から今当センター全支配人、幹旋の下に各邑より正月餅の寄贈を迎へ加州の病舎に呻吟する幾多薄倖なる人々に贈る事になつた由、実に美徳

◎中部四州より 職業申出

右に閑し8K支配人湯沢氏は左か如く語つた。余程以前から何が贈つて上げたいと思つて居たが、其の機を得ず遺憾に思つていた事であるが、幸ひ今回当局配慮の下に正月餅と得る事が出来たので、現西五六七十八位は加州の病院に發せられて居る人々に、我々の喜びを割ち與へる意味で各邑より正月餅の寄贈を仰が既に一月一回は郵送されて居り、今後とも一般薄倖なる人々を出生得る丈慰め度いと思つて居る。

民は此う仕事に志願するに、時節柄時宜に過ぎたことあり且つ各自の義務を、あると考へられ、多教有志の應募方を促してある。尚正消防天援助の講座に付いては一定の志願者のあり次第、演講されることである。

より課防消

昨日タウンホールで開かれた会議が折各區長は居るが、少いのは遺憾である。発表した、勿論此の仕舞は無報酬であるが、居る



新聞

吾人は先般のツキーマウンテン新聞の編輯長が新憲政... 新憲政の理諭を厭する傾向が...

品目豊富な百貨店

近頃セントラルの百貨店では最近... 各種の品物を豊富に揃へて...

家庭住診に關する重要事項

家庭住診に關しては、先般の重... 重要事項として、...

書屋武校館活動

ラヂオの活動、武校館の活動... 書屋武校館の活動は、...

本局職業幹部

本局職業幹部の活動... 本局職業幹部の活動は、...

田野に想ふ

ロッキーマウンテンの田野に想ふ... 田野に想ふ、...



### 就職申請注意

居住民の職業斡旋所に掲載されてある諸般の職業中其の何れに就職する場合に於いても就職申請書に出所許可願書を添附すべきである。それは此の手續により就職希望者の爲めに迅速に便宜と計り得るからである」と課長ノードル氏は語つた。

### 借地に就いて

職業斡旋課長ノードル氏は借地に就いて九の如く發表した。

當州内の多数の堅實な農家により果物や野菜の耕作は他一般農業に連する諸般の好條件が申出されてゐる。當センター居住民中此の地方で現金法に依り又日収法に依り農園を借地經營の希望者は當課の係員ベシオ氏迄出頭相談され度し。尚ベシオ氏事務所は元コントラクターの建物内に在る。

### 配達不可能郵便

先記郵便に付さる當りの者は

郵便局に出頭受取り再度し。

一 フランクリン、レヂオ

一 ショップ

一 ヨーシ、バーバーショップ

一 オリエントタル、シート、

一 アンド、ブランド

### 家具類取寄報告

行政課ハラデー氏の發表に依り居住民の郷里に残してある家具類を當所に取寄せせる爲二百餘通の願書を取括めて先日春慈當局宛發送した由。

### 柔道稽古に就いて

當センター柔道部では8日の道場で毎週四田川島師範並に十七名の助手により稽古が積りられてゐる。同師範は語るに「近く段級別の帯を配する」といふ事になつてゐる。當柔道部は新ハイスクール體育課に置かれ稽古日割は先を通りである。月水金、午後六時半—八時半、土曜日、午後二時—四時

最近當センター内の「安全」に關して集會を催し當警署長タムリンソン氏は所内「安全」につき色々を説明あり現在センター内に於いては多数のトラツクが運出されてゐるが水た管て眞備事件の無い事は非常の者ばしい事であると語つた。

今四ワシントン當局より通告されたタイム、キツパール新指針は九の通り準用され去る事に決定。

### 一 就働者が假りに監督の了解

解を求むる自由には休な場合、右働人は休んだ其日五分向ふ三日間りペリ

### 二 就働人が假りに監督より

正式にリリ、ズを受せずして其の部門を止す場合ベナリチーに處せられる。

### 三 就働者が正式にリリース

され現場は以前のオーパータイムを總勤定に入れるものとする。

### 四 部門の監督より、リリース

ズを受けり他の仕事に移る場合は、タイム、キツ

パーに然る可く通知して自分のカードを移つた方のタイム、キツパーに移牒する様申請す可きである。

一ヶ月が三十一日ある場合は最後の一日、又はオーバ

タイムを働いて、フル給料を受くる様心掛く可きである。

六働人が其月の三十一日に於いて就働する場合其の一日に對する報酬はない。

七、休日の前日は四時間、其翌日は八時間働いて休日の給料よりパー、丁可きである。

八、パート、タイム働きは、其の日、其の時間に應じて給料を支拂ふ。

九、時間働きは其の働時間を基準として支拂ふ。

十、前記八、九の働人に對しては了解のもとに休んだ時と去

「共其の日に對する給料は支拂ひをきりものとす。

### 二世兵士來訪

先週二世兵隊これらの當センター

一 末訪光の如し

松水リチャード、後、ホア、ク

山内正夫、吉田チーフト

三戸部博、齋藤忠夫

桑田サム、大橋チャッキ

河本カール、廣瀬 忠

### 諸課目教授

今回折に二世に對して特別教授の指導の下に英文和譯、和文英譯方法を毎水曜日午後四時より同五時十五分迄教授することになつた。詳細は使學部に照会あり度し。

### 選記術夜當部に於いて速記法

教授、初心者歓迎してゐる。尚速記講習會購置せし者に對しては右借金と返還することになつてゐる。

### マインデル氏の謝状

當所内奉事委員會は先週WR A 地方局長官マイヤー氏並に當所長リンドレー氏が極力轉送の結果此の非常時に當り予期しなかつた餅を口にする等、正月嵐合を満喫する事の出来た毎

意に對し郵董を謝状を贈つた由である。



女主に關する集會

マニラ支店開設

今回新一一般居住民の爲手... 本支店に引換へる所謂手... 事務所に設置、毎日午後一時半... より午後四時迄一般の便宜と... 図である。

新設警察署工事進行中

今回9F區に新設警察署の建築... 工事を開始し落成の晩には面... 目一新し社會に貢献すると誓... 長はたの如く語つた。

過去一ヶ月間に於て何等こ... 非と謂ふ犯罪の全かつた事は... 當収容所の平和と表示するも... のであつて今後と謂ふ共居作... 民の協働ともなふのである。

靴店の移轉

共同消費組合の靴部は近々... 下の娯樂案内、設備完了後... 娯樂営業所より移轉すること... になつた由、之れに付袖水底... け語る。目下の店內は靴部の... 移轉と同時に男女玉供の三部... 門に分けることに行つてゐる。

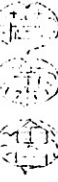
尚スバツシャル、セールは、... 特別場面で廣告する技術注意... あり度し。

讀稿の聲

郵便局長様に御願ひ申上げま... 下、常センク郵便サービス... 迅速を期し今日起一四... の發着と二日に改良し以て... せられたい願ひ及び、セールが... 弘びの受ける配達に欣慰とし... て午後四時頃で十分少く荷... とのなを、いひ、せうの切... に抑一考を御願ひします。

今迄の郵便配達

今迄の郵便配達毎日... となつてゐる若である。若し... 配達の際に場合はそのブラ... ック代表まで申込まれ、... 郵便トラックが毎日ラマール迄... 郵便物をとりに行き午後配達... してゐる現状であるから毎日... 二回の配達は不可能である。



今回常センター内二世青年に... 依り若葉會なるものがつく... 此の役員選挙が10日エリク... 。

一シヨンホールに於いて来る... 十七日行はれる由、會員は満... 此なく出席あり度し。

外部移住課業務

毎日三十件ばかりの出所許可... 申請に關するインクビニウ... が施行されてゐると同課々長... ハンソンのに発表された。此... に就ては既得者の其の家族を... 爲めに以願する場合、華府當... 局のりの許可率が多い。... 尚華府當では學方關係は頗る... 榮望してゐる由である。

寫眞機の區運交渉中止

西部沿道諸州に於いて同院... 住開始前取上げられた品の中... 眞機以外の品々に就いて沿... 岸の當局は外人財産管理局... り何等の返答も持せざる爲め... 當局内では寫眞機等の規定... 解禁を見ても今より三五連... に返還し難しとの事である。

此に付きリンドレー所長は... 當て革履の檢事總長宛て書中... であつたが氏に語る。本問題... に就いては宛に自既定方針の... 聲明がある迄、此以上沿岸各...

地警警察署との交渉は無様であ... らぬ。

食堂部員慰勞

當所内食堂部では去る五日火... 曜日度9人食堂で各食堂の子... 一ワクワック、主任ウエ... レス等を招き感謝と慰勞の宴... を張り田中正居両氏の司會で... 順も盛大であつた由、同課の佐... 藤氏は語つた。常夜式の功は... 濃藝に出場した方々の熱演の... 賜りである、深く感謝して... ゐる。

グラナダ停車場の注意

ラスコートの注意... 本ターミナル係民にしてグラ... ンターミナルより汽車便、又は... バスに依つて旅行する者は明... 以つて警察署長トマリソン... に出でる時はグラナダ迄の... 入スコートの便宜をはかる旨... を發表した。更に汽車便にする... 場合、切符は午後四時迄に買... 取の置かざるやあり斯くする... 時荷物等の受附も容易である... 更にバスのチケットは少く共前... 日に求め置かば、極注意され、困...

更にバスのチケットは少く共前... 日に求め置かば、極注意され、困...

KEY TO TRANSLATION

- 1. Coma, Enterprise
- 2. Mochi sent to coast
- 3. Jobs offered
- 4. Fine payment
- 5. Hospital-home calls
- 6. Request
- 7. Kiyabu
- 8. Request
- 9. Delivery
- 10. Delivery
- 11. Jiu jitsu
- 12. Timekeeping rules
- 13. Missed soldiers
- 14. New class
- 15. Application
- 16. Police building
- 17. Shop where
- 18. Letter to the editor
- 19. Letter for work
- 20. Letter
- 21. Home mail party
- 22. Lectures
- 23. Church services

にエスコートする車の乗客に... は限りある故、一般身内の者... のグラナダ行は控へられし... 。

於10日會堂